

# HISTORIC ALBINA ADVISORY BOARD

**MEETING 36**

*March 11, 2025*



# WELCOME!

---



This meeting includes live captioning.



Please mute when you are not speaking.



When calling in by phone, mute your computer speakers to prevent feedback.



Board chat is part of the meeting summary.



Experiencing technical difficulties? Call 503-479-8674.

# AGENDA

---

- ▶ Welcome/Introductions/Meeting Overview
- ▶ Public Comment
- ▶ Project Updates
- ▶ RAPP Engagement Update
- ▶ Design Update
- ▶ Next Steps and Adjourn

# 7 PRINCIPLES OF AGREEMENT

---

1. Your voice matters
2. Be authentic and genuine
3. Listen for understanding
4. Deal with issues, not with people
5. Experience discomfort
6. Remain respectfully engaged
7. Expect & accept non-closure

# PUBLIC COMMENT

- ▶ Focus comments on today's meeting topics
- ▶ Speakers have up to 2 minutes to comment
- ▶ To provide more extensive comments reference page 1 of your agenda

To provide comments

**Call:** 971-247-1195

**Meeting ID:** 845 4224 8686

**Passcode:** 909309

1. Dial \*9 to raise your hand
2. After you are invited to speak, dial \*6 to unmute

# PROJECT UPDATES





# PHASE IA: 2025 CONSTRUCTION START

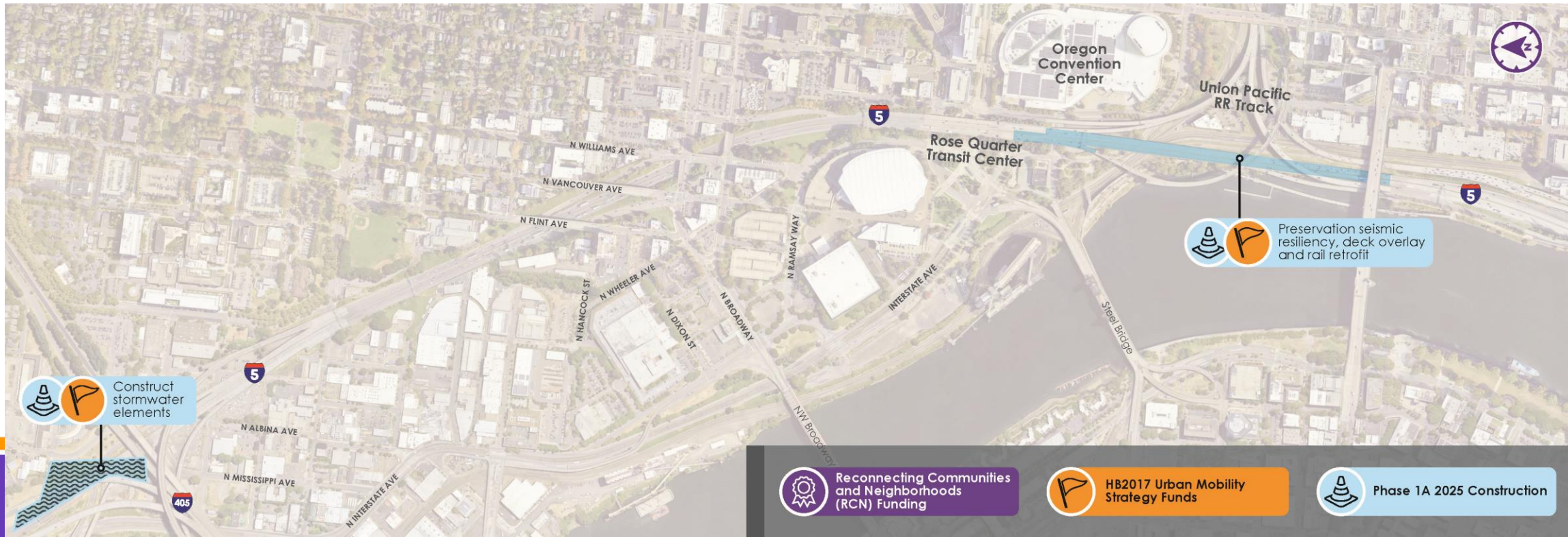
**Construction Start:** 2025

**Construction Scope:**

- Stormwater Facilities (at I-405)
- Bridge Preservation (at I-84)

**Benefit:**

- 2025 construction of shovel-ready components
- Gets community to work: maximizes DBE participation and builds capacity
- Reduces impact of inflation
- Provides required stormwater facilities for ODOT's Portland Harbor Agreement
- Preserves I-5 bridge structures





# PHASE I - INITIAL HIGHWAY COVER AND I-5 IMPROVEMENTS

**Construction Start:** 2027

## Construction Scope:

- Initial portion of Highway Cover (Broadway & Weidler), expanding area built with Reconnecting Communities grant award
- Partial I-5 safety and operational improvements

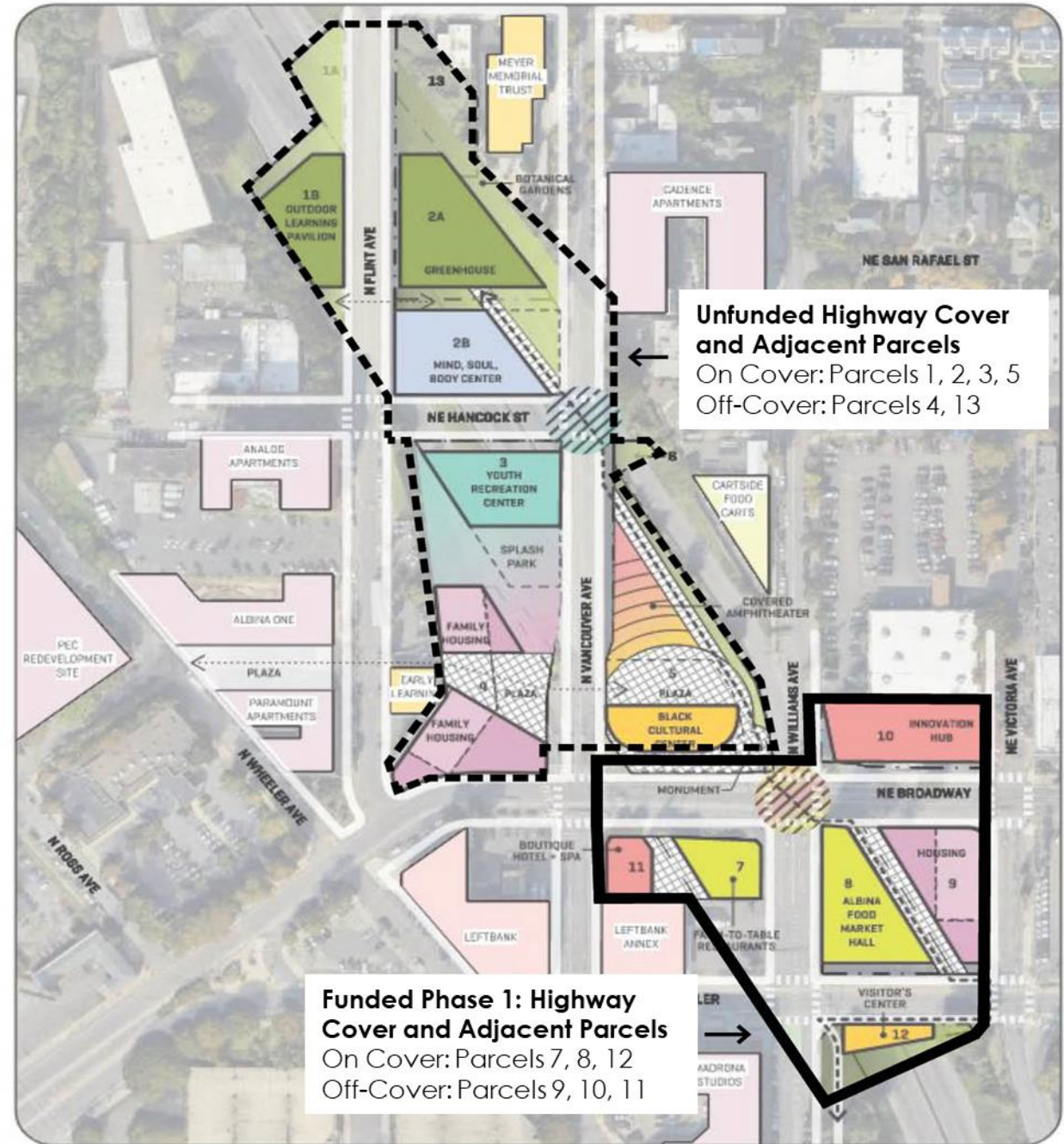


## Benefit:

- Builds first portion of highway cover at Broadway & Weidler with multimodal improvements
- Completes full southbound auxiliary lane between I-405 and Morrison Bridge exit
- Extends existing northbound auxiliary lane from I-84 to north of Weidler
- Provides signage for highway cover safety and supports project construction signage needs
- Enhanced constructability and reduced impact to traveling public on local streets and I-5



# PHASE I: INITIAL HIGHWAY COVER



\*Phase 1 Off-Cover Parcels required for construction staging

# RAPP & CITY ENGAGEMENT UPDATE



# FEB. 27 RAPP KICKOFF EVENT

---

- ▶ Event Summary
- ▶ Key Take-Aways
- ▶ Next Steps

[portland.gov/rapp](https://portland.gov/rapp)

# DRAFT APRIL HAAB AGENDA

---

## Cover Work Session: April 24 In-Person

- ▶ Land Use and Urban Design
  - » Phase I Cover Footprint
  - » Public Realm Activation Priorities
- ▶ Transportation
  - » Broadway/Weidler Main Streets
  - » N Williams Ave Streetscape & Public Realm
  - » Parking and Access

# DESIGN UPDATE





# 30% DESIGN: HAAB INPUT

---

- ▶ Highway Cover
  - » Girder size and layout
  - » Structural considerations
  - » Due Diligence
- ▶ Cover Offsets
  - » Bridge Joints
  - » Geotechnical Considerations
  - » Utilities and Access
- ▶ Local Street Circulation

# LOOKING FORWARD

---

## Design input remaining

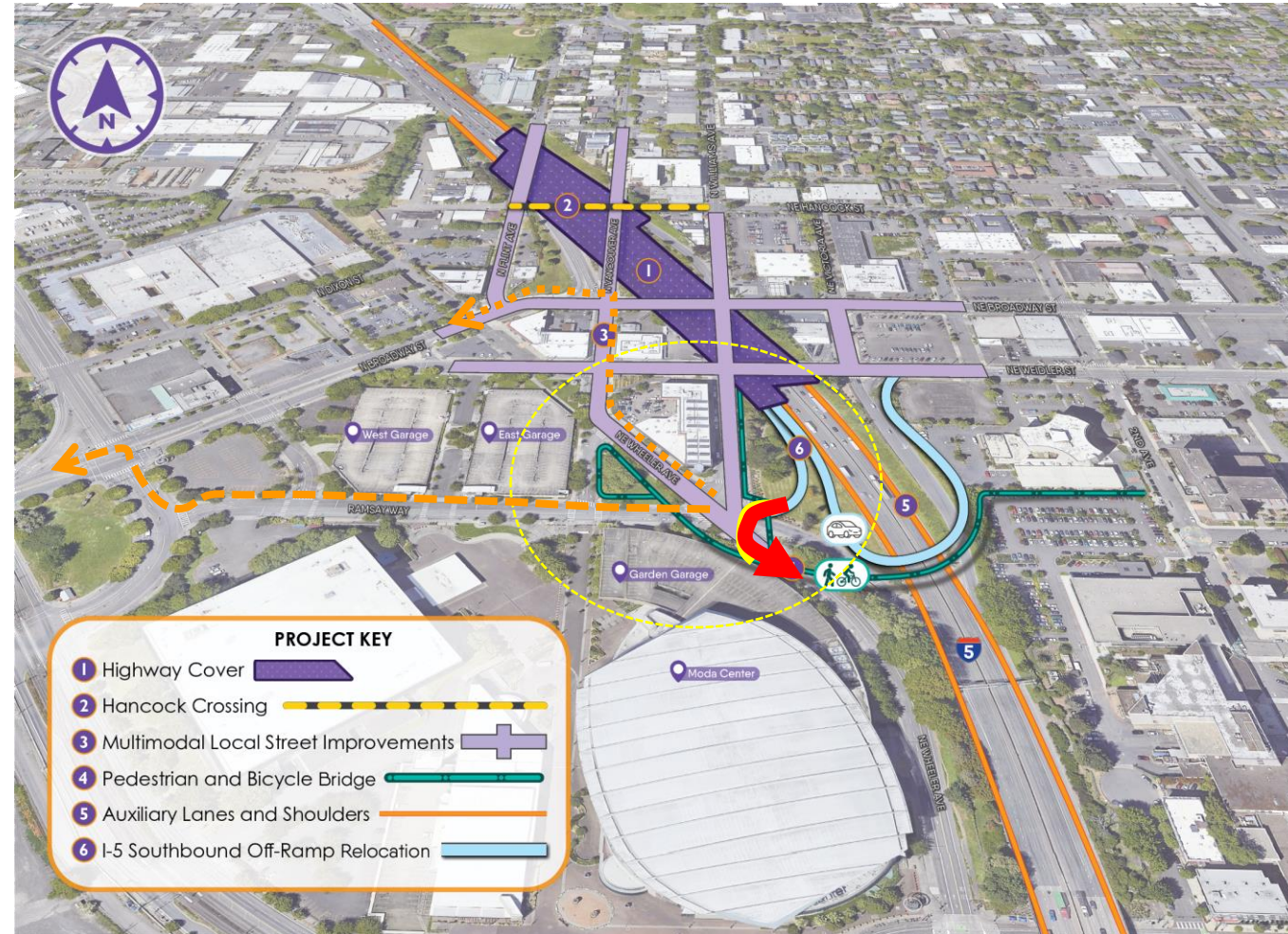
- ▶ Pedestrian and Bicycle Bridge aesthetic input
- ▶ Tunnel portal aesthetic input
- ▶ Interim cover use
- ▶ Street design

## Other project related opportunities for input

- ▶ AVT and City will continue to engage with this historic Albina and Black community on the Highway Cover Development planning

# 30% DESIGN - SOUTHBOUND WILLIAMS AVE

- ▶ Previously evaluated 2-way Ramsay and 2-way Wheeler concepts for local circulation
- ▶ Working with project partners the project is advancing a design refinement that maintains the southbound flyover ramp and routes remaining trips to southbound Williams Ave

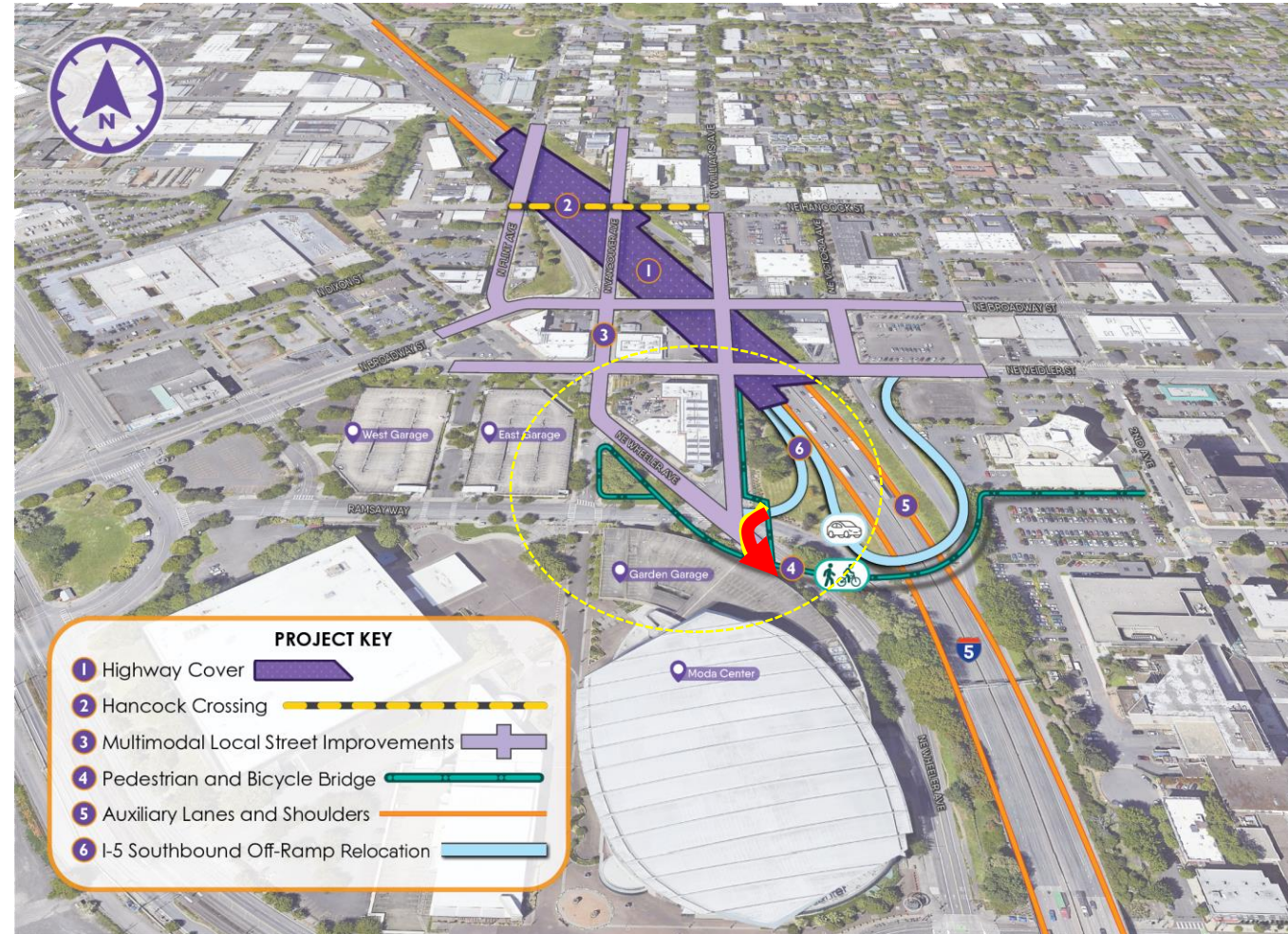




# 30% DESIGN - SOUTHBOUND WILLIAMS AVE

## Considerations:

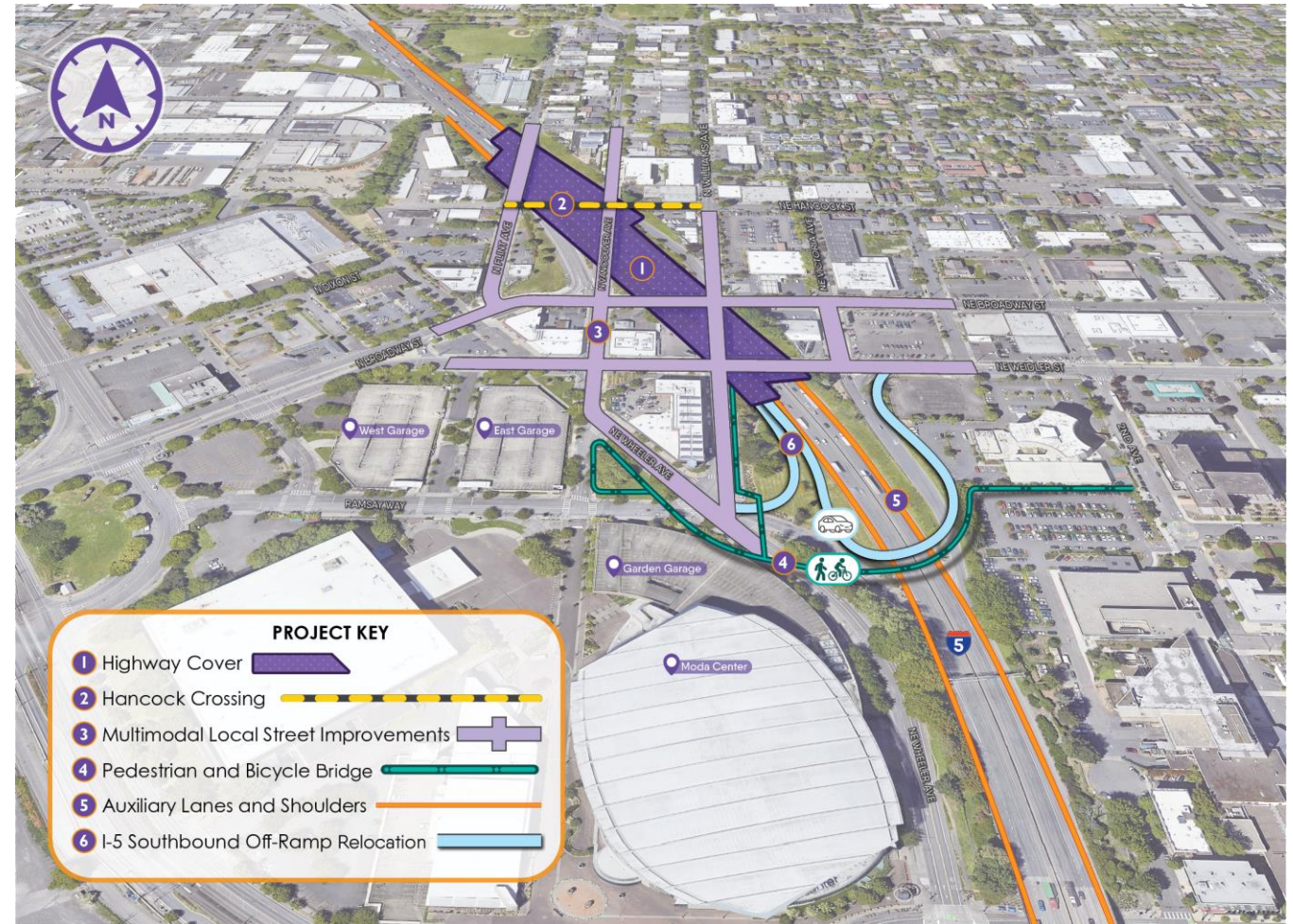
- ▶ Maintains the flyover ramp to eastbound Weidler Street to serve majority of ramp trips
- ▶ Avoids circulating additional ramp trips into the Broadway/Weidler corridor and other local streets near new community orientated development
- ▶ Does not require event traffic control changes to Ramsay Way





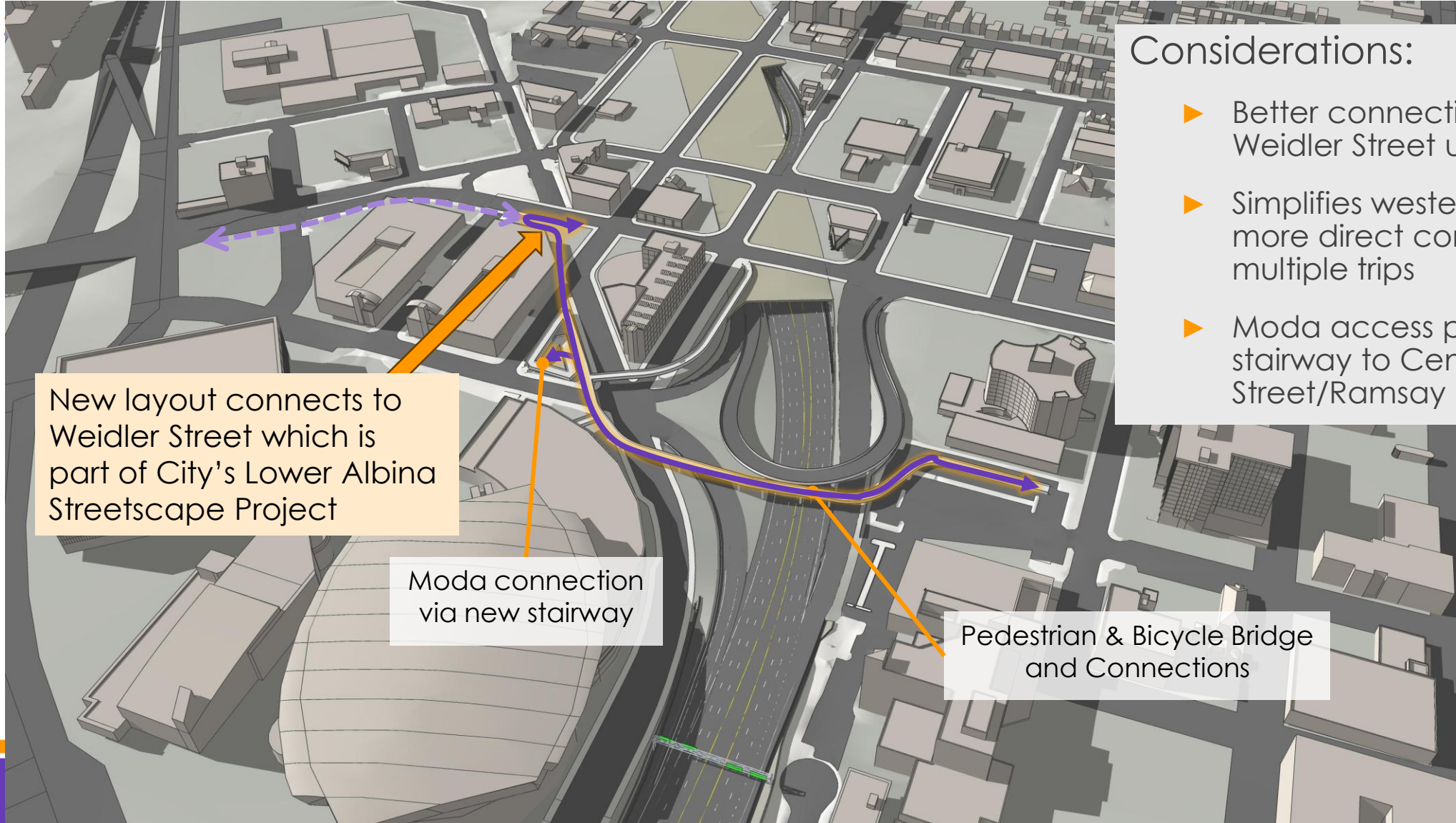
# PEDESTRIAN AND BIKE BRIDGE: UPDATE

- ▶ Exploring a different touchdown location
- ▶ Important link in the Central City Green Loop strategy to connect destinations around the core with a safe and fun path of travel for people of all ages and abilities.





# PEDESTRIAN AND BIKE BRIDGE: DESIGN REFINEMENT



## Considerations:

- ▶ Better connection with Broadway/Weidler Street users
- ▶ Simplifies western touch down with more direct connection for multiple trips
- ▶ Moda access provided via new stairway to Center Court Street/Ramsay Way

# HAAB LOOKAHEAD

**APRIL 24**  
**City-led RAPP Session**

- **Information:**  
Review inputs from broader community
- **Discussion/Workshop:**  
Refine Urban Design & Public Realm details of highway cover scenario

**In-Person**

**MAY 13**  
**Joint HAAB/COAC**

- **Updates**
- **Discussion:**  
Construction Preparation
- Other topics TBD

**In-Person or Virtual**

**JUNE 10**  
**HAAB**

- **Updates:**  
Construction, AVT workplan, RAPP engagement
- **Reflections:**  
Combined HAAB/COAC meeting
- **Discussion:**  
Design – opening day / interim use

**Virtual**

**SUMMER BREAK**

# NEXT STEPS



# THANK YOU!

**Website:** [www.i5rosequarter.org](http://www.i5rosequarter.org)

**Email:** [i5rosequarter@odot.oregon.gov](mailto:i5rosequarter@odot.oregon.gov)

**Phone:** 503-470-3127

