

JOINT I-5 ROSE QUARTER ADVISORY COMMITTEES MEETING

May 13, 2026



WELCOME!



This meeting includes live captioning.



Please mute when you are not speaking.



When calling in by phone, mute your computer speakers to prevent feedback.



Board chat is part of the meeting summary.



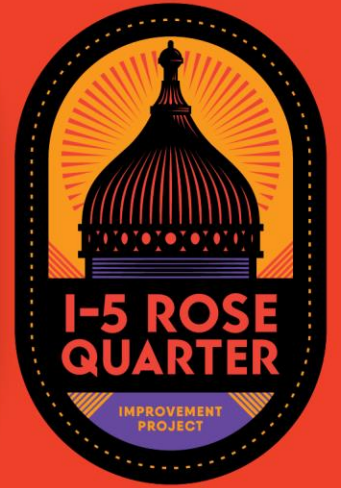
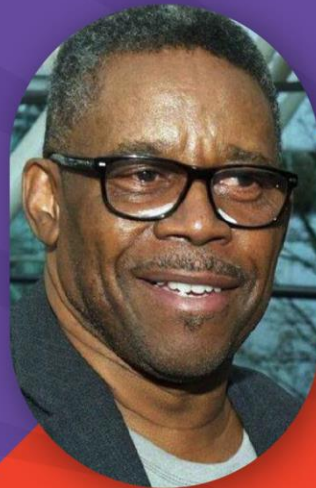
Experiencing technical difficulties? Call 503-479-8674.

I-5 ROSE QUARTER IMPROVEMENT PROJECT

COAC MEMBERS

Johnell Bell, Facilitator
Michael A. Burch
Katrina Cloud
Felicia Tripp Folsom
Joe McFerrin*
James Posey
Janelle Waltz
Cinna'Mon Williams

**Not Pictured*



I-5 ROSE QUARTER IMPROVEMENT PROJECT

HAAB MEMBERS

- Dr. Carlos Richard
- John Washington III
- Bryson Davis
- Joy Alise Davis
- Keith Edwards
- Kimberly Stowers
- Moreland
- Dr. Amato-Blackmon*
- JT Flowers*
- Leslie Goodlow
- Kevin Modica
- Sprinavasa Brown
- Andrew Campbell

**Not Pictured*



AGENDA

- ▶ Welcome/Introductions/Meeting Overview
- ▶ Public Comment
- ▶ Project Updates
- ▶ PMG Update
- ▶ Construction Update
- ▶ City Update
- ▶ Next Steps and Adjourn

7 PRINCIPLES OF AGREEMENT

1. Your voice matters
2. Be authentic and genuine
3. Listen for understanding
4. Deal with issues, not with people
5. Experience discomfort
6. Remain respectfully engaged
7. Expect & accept non-closure

PUBLIC COMMENT

- ▶ Focus comments on today's meeting topics.
- ▶ Speakers have up to 2 minutes to comment.
- ▶ For instructions on providing more extensive comments, please reference page one of your agenda.

To provide comments

Call: 971-247-1195

Meeting ID: 816 4349 6662

Passcode: 566795

1. Dial *9 to raise your hand
2. After you are invited to speak, dial *6 to unmute

WELCOME



Meliah Masiba
Government & External
Relations Administrator

PROJECT UPDATES



PMG UPDATES

With Phase 1B scope in place, the group turned its attention to Phase 1C.

- ▶ February 27 PMG meeting
- ▶ March 20 PMG meeting
- ▶ April 9 PMG technical review meeting



PMG UPDATES

► April 25 PMG meeting



PHASE 1C
CONSTRUCTION

Oregon
Convention
Center

3 EXTEND NORTHBOUND
MERGING LANE

2 COMPLETE SOUTHBOUND
MERGING LANE

1 SOUTHERN PORTION OF HIGHWAY
COVER AND LOCAL STREETS

Willamette River

CONSTRUCTION UPDATES



PROGRESS & ACCOMPLISHMENTS TO-DATE

Bioretention Pond & Water Quality Vaults

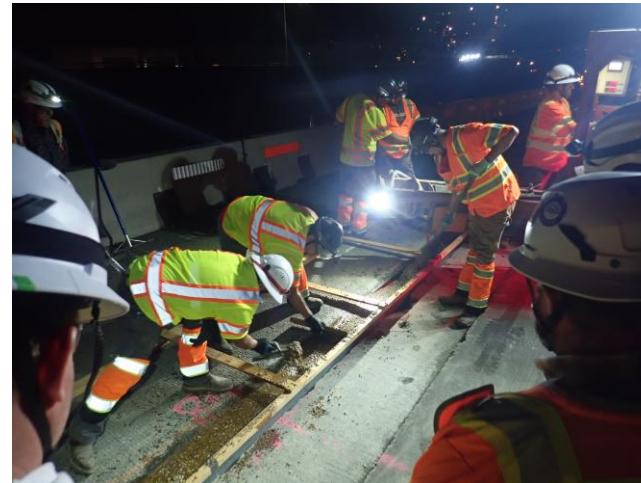
- » Pond construction continues
- » Water quality vaults are set



PROGRESS & ACCOMPLISHMENTS TO-DATE

I-5 Work

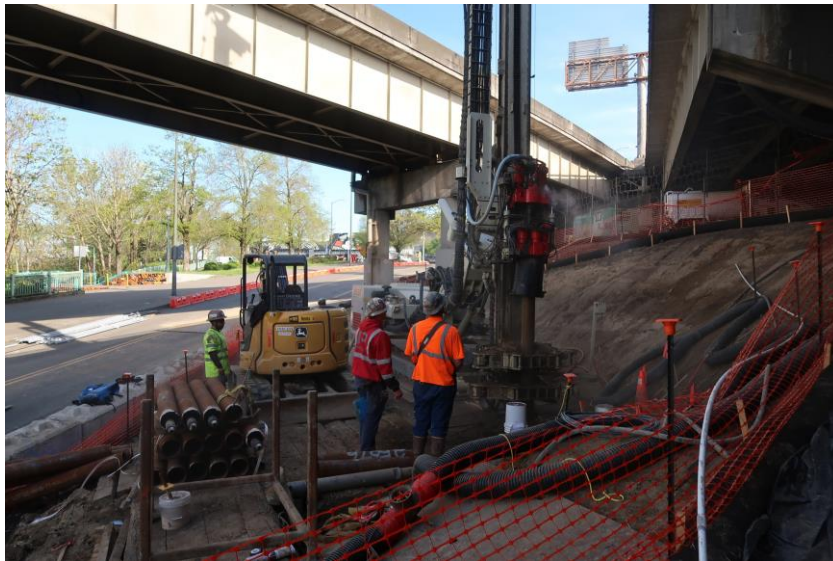
- » Cutting Edge completed median strengthening
- » Longitudinal joint repairs continues and almost complete
- » Gage It placed southbound temporary barrier
- » Activities begin in preparation for truss sign bridge drilled shaft construction



PROGRESS & ACCOMPLISHMENTS TO-DATE

Gore Widening

- » HSJV completed constructing access for Pacific Foundation
- » Micropiles are complete!



Seismic Retrofit

- » Steel is being fabricated
- » Continuing core drilling



UPCOMING CLOSURES

Surface Streets

- » Holladay Exit Ramp Closures
- » Lloyd Blvd closed through June for gore widening activities
- » Interstate Avenue NB closures

I-5

- » Intermittent A or B-lane closures on I-5 to facilitate construction activities

LANE, RAMP AND ROAD CLOSURES



SUMMER 2026 I-5 CONSTRUCTION CLOSURES



I-5 CLOSURES OVERVIEW

- ▶ July: Overnight weekend closure on all lanes in both directions for sign bridge installation.
- ▶ September: Continuous closure of I-5 southbound for up to five weeks for structural repairs and surface replacement
- ▶ Anticipated impacts
 - » Increased congestion and travel times
 - » Detours to I-405 and I-205

I-5 SIGN BRIDGE INSTALLATION

Purpose: Signage for safe navigation after construction is complete

Traffic Impacts:

- ▶ **Closure:** I-5 all lanes in both directions between I-405 & I-84
- ▶ **Duration:** up to 14 hours - 10 p.m. Saturday to 12 p.m. Sunday
- ▶ **Estimated Timing:** July 2026

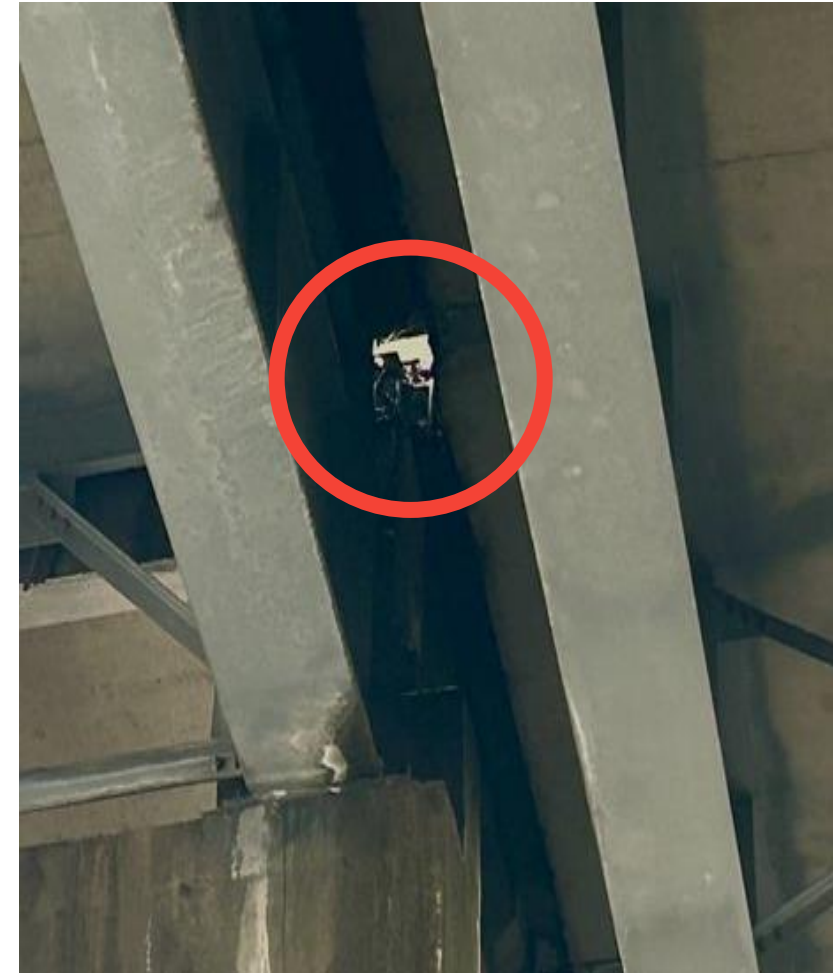


I-5 STRUCTURAL REPAIR & SURFACE REPLACEMENT

- ▶ I-5 road surface has surpassed its 25-year lifespan
- ▶ Increasing number of ruts, cracks, and potholes from heavy use
- ▶ Delaying updates would cause conditions to worsen, increasing future repair costs and frequency of emergency repairs



I-5 SB EMERGENCY BRIDGE REPAIR – 4/28/24





I-5 STRUCTURAL REPAIRS & SURFACE REPLACEMENT CLOSURES

- ▶ **Closure Duration:** up to 5 weeks
- ▶ **Estimated Timing:** September 11 to early October
 - » Closure must be completed during dry months
- ▶ **Planning:** 3 years of planning with contractor to optimize schedule
 - » Mobility Advisory Committee (MAC) coordination
 - » Region 1 coordination



Google Street View: Driver's perspective travelling on I-5 SB through planned work area













WHY NOT LONG-TERM SINGLE LANE CLOSURES?




- ▶ **Cost Increase:** \$4.5 - \$7 million
- ▶ **Duration:**
 - » Would require two longer closures: at least 2 months
 - » Schedule shifts could result in 8 - 9 month delay if weather window closes
- ▶ **Safety and traffic operations:**
 - » **Narrow width:** Protective barrier would only allow 12 ft of lane space (16 ft lane minimum for interstate)
 - » **Worker safety:** If barrier was not used, significant safety risk to crew from live traffic
 - » **Traffic safety:** Demolition activities would create hazardous conditions for traffic
 - » **Equipment:** Safety issues and inefficiencies to get equipment into single lane work area
 - » **Significant Traffic Impact:** Only 1 lane on I-5
- ▶ **Roadway quality:**
 - » Vibration from traffic would reduce efficacy of the bond between deck and overlay → new overlay could fail sooner

WHY NOT WEEKEND DIRECTIONAL CLOSURES?

- ▶ **Cost Increase:** \$6 - \$9 million
- ▶ **Duration:**
 - » Would take longer to accomplish due to inefficiencies: 13-15 weekend closures
 - » Could take a couple of construction seasons (2+ years) to complete
- ▶ **Traffic and Work Inefficiencies:**
 - » **Traffic control:** Extensive traffic control setup and takedown needs to occur multiple times
 - » **Work planning:** Contractor would need to mill, hydroblast, repair the deck, allow time for the deck to dry, and then replace the portion of overlay removed with high-early material in one weekend
 - » **Delays:** Difficult to plan for contingencies → High chance of delays to reopening
 - » **Impact to Traveling Public:** Directional closures every weekend during summer months
- ▶ **Roadway quality:**
 - » Results in many joints between overlay pours, creating more failure points

ADVANTAGES OF CONTINUOUS 5 WEEK CLOSURE

	Single Lane Closures	Weekend Directional Closures	Continuous Directional Closure
Construction Duration			
Safety			
Road Quality			
Cost			

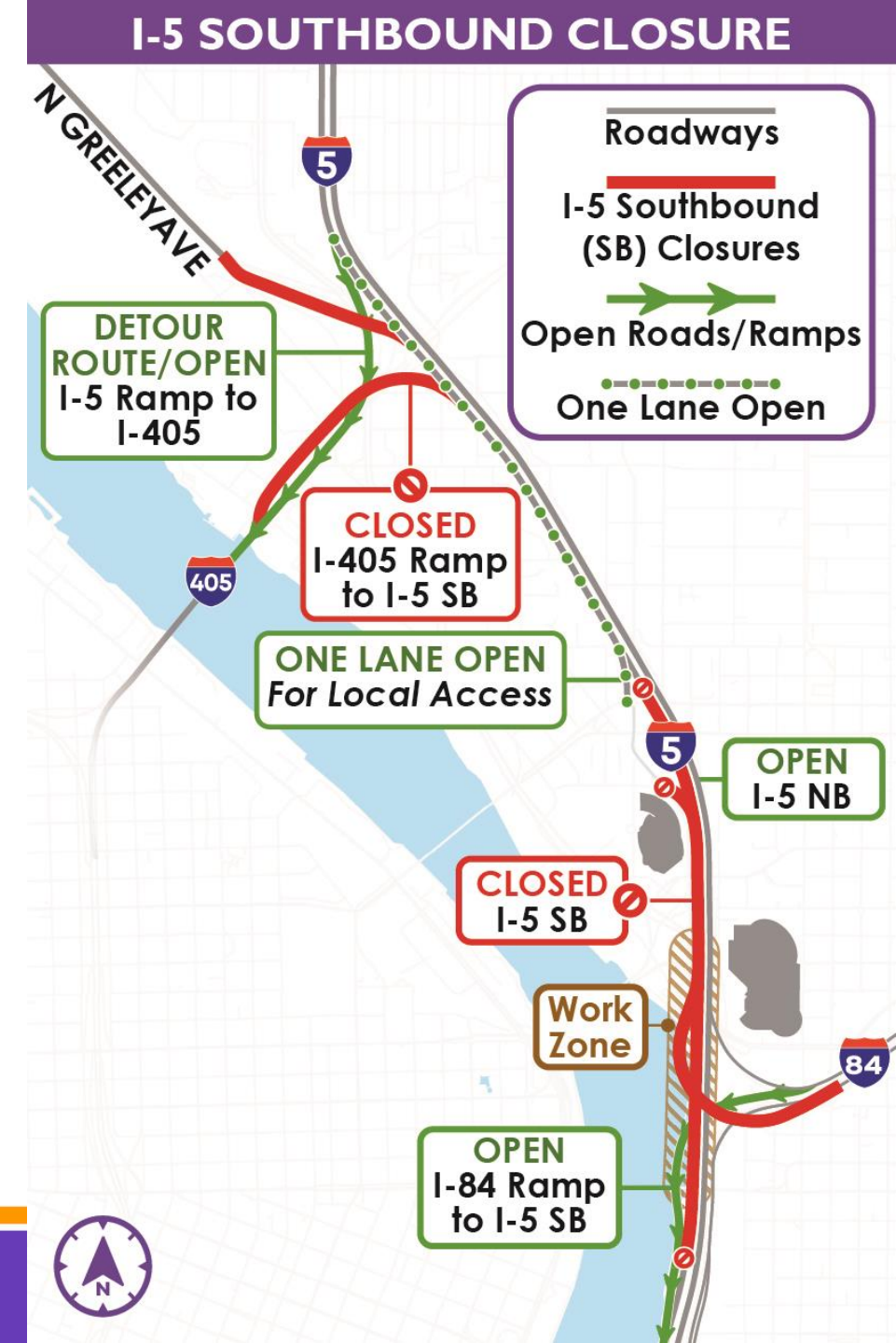
 Best  Average  Worst

I-5 SOUTHBOUND CLOSURE

- ▶ **Purpose:** overdue repairs to bridge surface & structure for safety and preservation of I-5

Traffic Impacts:

- ▶ **Closure:** All lanes of I-5 southbound between I-5 SB Exit to Broadway/Weidler and I-84
- ▶ **Duration:** All hours of the day for up to 5 weeks
- ▶ **Estimated Timing:** Sept 11 to early October



ANTICIPATED TRAFFIC IMPACTS

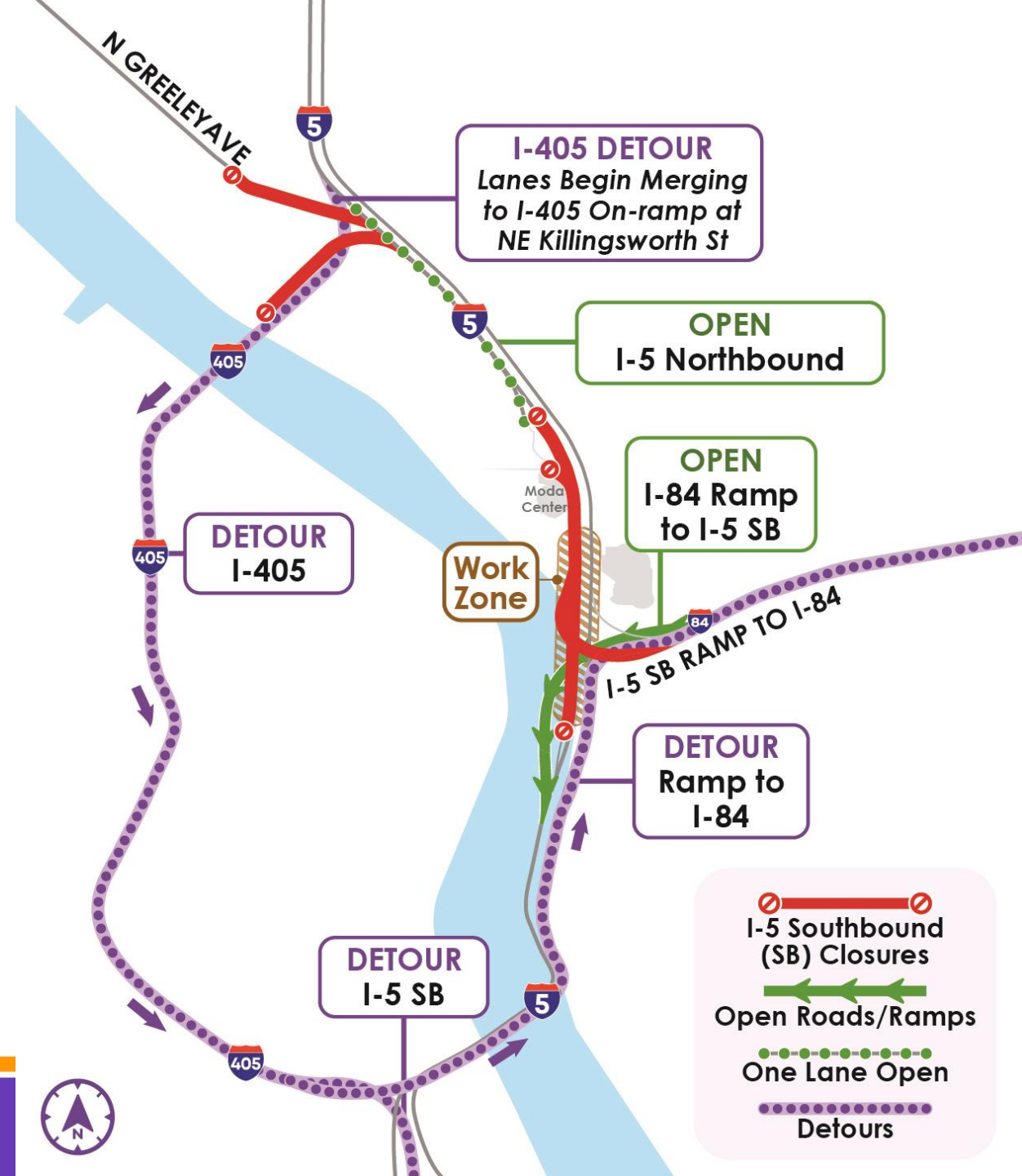
▶ Detour Routes:

- » I-405
- » Broadway/Weidler for local traffic
- » I-205 for regional traffic

▶ Modeled I-5 Traffic Impacts:

If current traffic levels remain unchanged at peak hours:

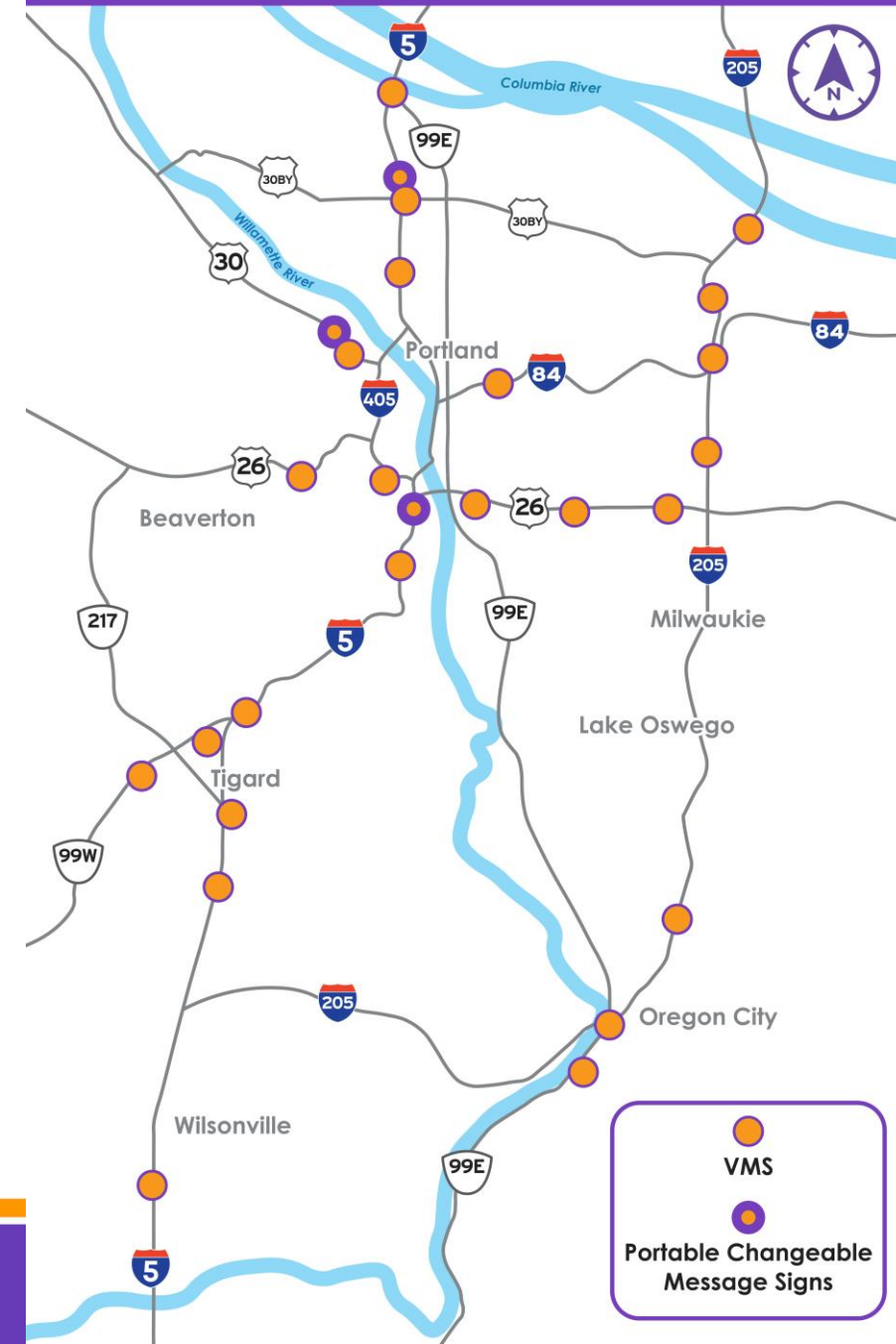
- » Congestion expected to extend into WA
- » Travel times 2-3x longer
- » Increased hours of congestion
- » Expect many people to find parallel routes



TRAFFIC MANAGEMENT APPROACH

- ▶ **Clear incidents quickly** via ongoing monitoring and incident response
- ▶ **Improve traffic flow** via signal and ramp meter adjustments
- ▶ **Provide closure and detour information on highway messaging signs** in Oregon and Washington
- ▶ **Encourage drivers to plan ahead and change travel if they're able** with robust public awareness campaign

VARIABLE MESSAGE SIGNS (VMS)



COMMUNICATIONS OBJECTIVES

GOAL: Reduce demand through communications campaign

- ▶ Travelers know how to navigate traffic impacts
 - » Encourage people to change route, use alternate modes and/or stay home
 - » Travelers understand the need and future benefit for closures
- ▶ Partner agencies and stakeholders are prepared for closures and assist with sharing messaging
- ▶ Team and travelers respond quickly to unplanned incidents

COMMUNICATIONS APPROACH

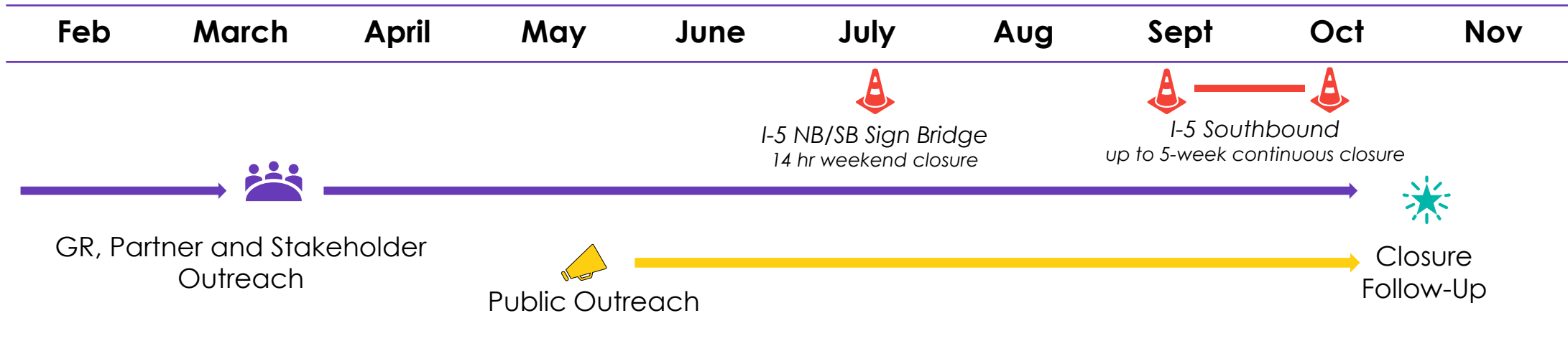
Many touches; avoid surprises

- ▶ **Interested party outreach + messaging toolkit:** businesses, facilities, and industries
- ▶ **Briefings** of elected officials and staff
- ▶ **Proactive media strategy**
- ▶ **ODOT distribution channels:** social, email, text message, website, e-newsletter, mailer
- ▶ **Paid advertising campaign:** print, radio, digital

OUTREACH TO DATE

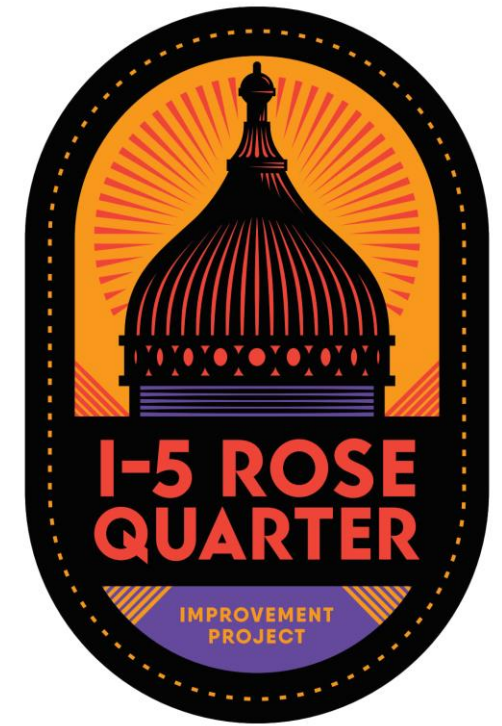


CLOSURE OUTREACH SCHEDULE



HOW YOU CAN HELP

- ▶ Reach out with questions or comments
- ▶ Stay informed
 - » Sign up for project emails and text alerts
- ▶ Share information about the closures with your communities
 - » We will share a toolkit of messaging and graphics for your use



www.i5rosequarter.org

CITY UPDATES



Reconnecting Albina Planning Project

HAAB + COAC
May 13, 2026



THE BUREAU OF
**PLANNING &
SUSTAINABILITY**

PBOT
PORTLAND BUREAU OF TRANSPORTATION



PROSPER
PORTLAND

ALBINA
albinavision.org

Agenda

- Background
- April Engagement Update
- Project Next Steps



Background

- The Reconnecting Albina Planning Project (RAPP) is a partnership between Albina Vision Trust (AVT), the Portland Bureau of Planning and Sustainability (BPS), Portland Bureau of Transportation (PBOT), and Prosper Portland
- It creates a **district-wide development framework plan** for Lower Albina that fosters equitable and sustainable outcomes, centered on restorative development for Portland's historic Albina communities.
- Framework elements include: **Land Use and Public Realm, Streets, and Community Stewardship/Governance Framework Plan**
- Previous and ongoing planning efforts in the area will serve as a foundation on which to refine and build **land use, urban design, and transportation policies and tools**.

Project Area



LEGEND

- | | | |
|--------------------------------------|--|------------------------------------|
| RAPP Plan Area Boundary | Broadway, Williams, MLK (Retail/Commercial Corridor) | Potential for Green Loop Alignment |
| Potential District/Regional Gateways | Weidler, Vancouver, Grand, Interstate (Boulevard) | Main Street Activation |

Disclaimer: These drawings are illustrative, providing conceptual ideas and do not represent regulations, requirements, or changes to existing or future development. These are intended to spark conversation about future possibilities for development, the public realm, and the street environment.

April 2026 Engagement

- RAPP Workshop held 4-30-2026
- Approximately 60 participants
- Open house + table discussions
- Topics included: future development framework for Lower Albina, public realm, history and identity, transportation



April 2026 Engagement

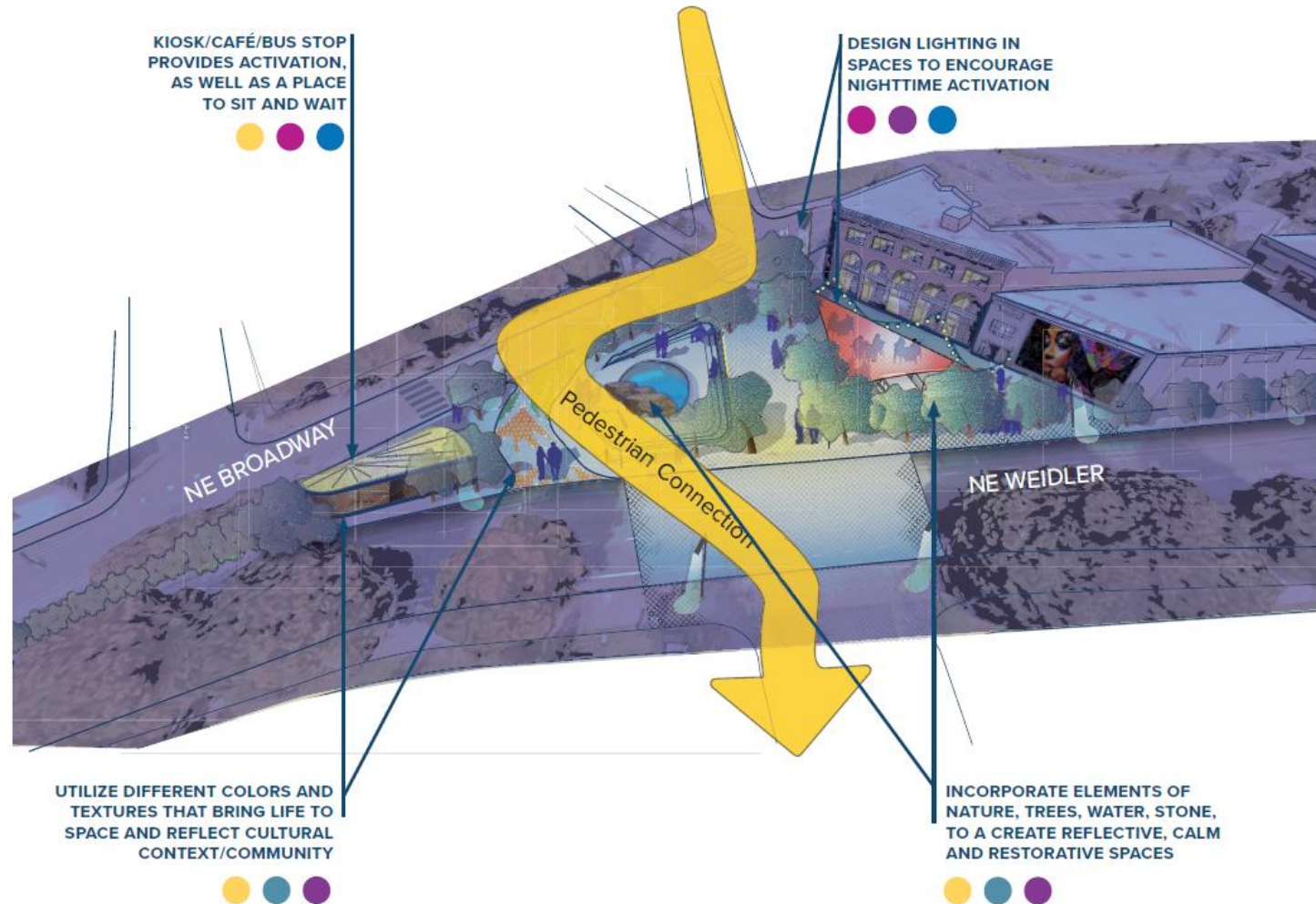
- Small group discussions building off high-level feedback from December open house
- “Deeper” discussions on key project areas: pedestrian realm, Broadway/Weidler East, Rose Quarter/ Waterfront
- Participants divided into 8 tables, each with a facilitator and note taker
- Staff are still analyzing feedback to determine how to best incorporate into the report (grant deliverable)



Q3

How can we best respect and elevate the history and culture of Lower Albina in our open spaces?

Below is an example of a possible future open space at the Leftbank Building.



Below are some examples of how sites throughout the district have begun to elevate the area's history, culture and current community:



MLK Jr. Gateway Project



Historic Black Williams Project



Mural at the Albina Library

Community culture in the built environment dictates that spaces implement strategies from the following themes:

- LIVING CULTURAL PRESENCE
- SPACES DESIGNED FOR PEOPLE
- GREEN, RESTORATIVE GATHERING PLACES
- WALKABLE, GREEN, EVERYDAY ENVIRONMENTS
- HUMAN-SCALE ACCESS AND MOBILITY

Disclaimer: These drawings are illustrative, providing conceptual ideas and do not represent regulations, requirements, or changes to existing or future development. These are intended to spark conversation about future possibilities for development, the public realm, and the street environment.

April 2026 Engagement - Table Discussions

Highlights from Question 3

- Participants responded positively to activating the Broadway/Weidler triangle space as a **safer, more welcoming, and culturally active gathering area** for everyday use
- Strong interest in **interactive storytelling, public art, and interpretive design** that actively communicates the **history of Lower Albina**
- Participants emphasized the importance of **Black cultural presence, Black-owned businesses, and honoring stories of displacement** and urban renewal
- Responses highlighted opportunities for **flexible gathering spaces, performances, markets, sports, and community programming** that keep culture visible and evolving



April 2026 Engagement

Informing the Final Report

- Feedback from April's workshop + previous engagement will inform key recommendations in the final report
- Discussion notes are being reviewed to identify recurring themes, shared priorities, and key areas of opportunity or concern
- Community input will help refine recommendations related to public space, connectivity, cultural identity, and district activation
- Feedback will help inform future public investments, partnerships, and restorative development opportunities in Lower Albina

Next Steps:



Final engagement event
open house: August
2026



Expanded engagement
activities will be ongoing



Report draft and
completion: Fall 2026

NEXT STEPS



THANK YOU!

Website: www.i5rosequarter.org

Email: i5rosequarter@odot.oregon.gov

Phone: 503-470-3127

